

Standard Fittings (Kit Part #15017)



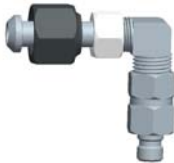
15001 GM 5/16" male inverted flare



15002 GM 5/16" female extruded flare



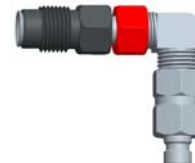
15003 GM 3/8" male inverted flare



15004 GM 3/8" female extruded flare



15005 Ford 5/16" male piloted inverted flare. Use with hose for female side



15006 Ford 3/8" male piloted inverted flare



15007 Ford 3/8" female piloted extruded flare



15008 Chrysler 3/8" male extruded flare



15009 Chrysler 3/8" female inverted flare



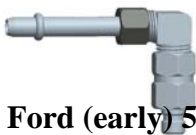
15010 Ford 5/16" male extruded flare



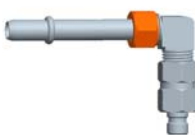
15011 Ford 5/16" female inverted flare



15012 GM/Chrysler 3/8" spring clip style male quick coupler



15013 Ford (early) 5/16" beaded style quick coupler requires disconnect tool. Use w/hose



#15014 Chrysler/ Ford 3/8" beaded style quick coupler. Use w/hose



#15015 Universal multi stepped adapter



15016 Universal 3/8" soft hose



15101 Ford (newer) 3/8" barbed style quick connect. Requires 15051 or equivalent disconnect tool



15112 GM/ Chrysler 3/8" spring clip style female quick coupler